

## Newsletter

May 2023

### Great Big Green Week: 10-18th June

*If you are part of a local community group and wish to get involved in the Great Big Green Week do get in touch. It's an opportunity to engage with sustainability issues and put these on show. ChalCAN will be running events, but we'd love local groups and schools to join in. Events so far include:*

#### **SATURDAY 10TH JUNE**

- A ChalCAN Biodiversity stand on the Green by Chalford Millennium bus stop, with a focus on how to increase biodiversity in your garden, and promoting the ChalCAN Biodiversity Trail.
- 11am – A beginner's guide to making compost (in France Lynch). To register for a place please send an email to Gill at [info@chalcan.org.uk](mailto:info@chalcan.org.uk).

- In the afternoon, a second compost workshop open to Garden Trail ticket holders.

#### **SATURDAY 17TH JUNE**

- 10am – ChalCAN's community walk to highlight substitute places in the area with best display of biodiversity.
- 2-4pm – ChalCAN's family friendly bike ride will start from the Millennium bus stop in Chalford Hill and/or Thomas Keble School. Bike and maintenance checks will also be carried out at the same time.

**THE GREAT  
BIG GREEN  
WEEK** 

### A Community Compost Scheme for Chalford



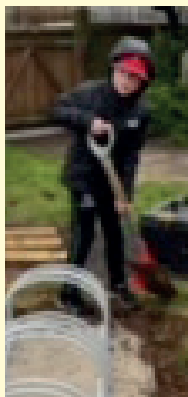
A group of residents are considering the options for establishing a community compost scheme in Chalford, similar to the one operating in Bisley. Such a scheme would take people's garden waste and use it to produce healthy peat free compost. The benefits would be less CO2 produced by trips to the dump, no need for bonfires, less money spent on bought compost (and therefore fewer plastic bags) plus a positive, pro-active contribution towards the parish's Net Zero objectives and a new community asset.

The first step is to understand the level of demand for a scheme within the parish, so please fill out our survey at <https://tinyurl.com/3cfafdp2> (hard copy available from the Parish Centre) and tell us what you think. If you fancy getting involved, email **Karen Phiminster** at [kjpmail66@gmail.com](mailto:kjpmail66@gmail.com).



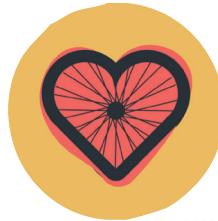
## Other news from ChalCAN

- ChalCAN Transport group are planning a Family Friendly Bike route around Chalford. We will be launching this at the Great Big Green Week (17th June 2-4pm). We could do with some help – we'll need about 8 people to marshal the event. If you can help, please contact Gill at [info@chalcan.org.uk](mailto:info@chalcan.org.uk).
- There was a good turn-out for the Pond making Workshop at Eastcombe Hall in March. If you missed it but still want inspiration have a look at [www.wildlifetrusts.org/actions/how-build-pond](http://www.wildlifetrusts.org/actions/how-build-pond).
- Our Early Bird Community Walk in April attracted 15 people. On a beautiful morning we heard a wonderful range of birdsong.
- The ChalCAN Biodiversity Group is planning a 'Nature Street' event at Sycamore Grove to encourage residents just establishing their gardens to incorporate nature friendly features.
- ChalCAN Biodiversity will be helping Bussage schoolchildren to plant a new hedge soon. Let us know if you'd like to help.
- We are pleased to announce that a new bike rack have been successfully installed at Bussage School. Funding from ChalCAN on a grant from the GCC Build Back Better fund has enabled the school to complete this project, which had been on their wish list for the past few years. We have more bike rack installations planned for Eastcombe Scout hut, Frith Youth Centre and France Lynch Church Rooms.
- The Energy Group continue their surveys to identify where improvements to insulation might help increase energy efficiency. Recent attention has focussed on the Frith Youth Centre.
- A big thank you to the donor who left four healthy young oak trees at the Parish Council offices recently for us to replant in a suitable spot. More donations welcomed to be planted locally.
- A welcome to ChalCAN's new Administrator – Gill Thomas.



## Thomas Keble School

***The School are looking for a greenhouse to replace a damaged one. If you have one, either ready dismantled, or ready to be dismantled please let them (or us) know.***



## Love to Ride

As part of Gloucestershire County Council's strategy to increase the number of people cycling, they are currently promoting Love to Ride Gloucestershire's Bike Month challenge. It runs throughout May, and people can win prizes by logging rides. Love to Ride is funded by Gloucestershire County Council and is completely free for people to sign up and use. For more information go to <https://www.lovetoride.net/gloucestershire>.



## Dark Skies

Recent scientific investigations are revealing that the increasing use of "cold" white LEDs lamps at night is having a deleterious impact upon ecological systems. The behaviour of creatures requiring darkness at night for sleep, safe movement, reproduction, predation and so on has, within the past one hundred years or so, been turned upside down by the ever-increasing use of artificial lighting at night.

In the public realm, while external lighting can increase the perception of safety, security or ambiance, benefits can be subjective. To minimise the impact upon nocturnal wildlife, lighting levels should not be excessive for the task and lamps with a "warm" colour should be used. The lights should be directed downwards only, with no upward spill above the horizontal plane. Motion sensors or timers should be used with short durations. The emitted light should fall within the boundary of the area being lit and not beyond – soft landscaping can be used to shield the lights from view beyond the boundary.

## FSC/PEFC certification schemes

There are plenty of organisations dedicated to fact checking whether a company's claims are accurate and trustworthy and they all have their own stamp of approval. However, as a conscious consumer, it's hard to know what each label means. A label which most of us are familiar with (without realising) is responsible forestry. Most common is a mark of FSC or PEFC which you can find on timber, wooden products, paper, surfboards, wine bottles, instruments, garden furniture, packaging, books, clothing, plants, footwear, food items and many more! Staples like toilet tissue and paper in the UK are usually FSC or PEFC certified. These marks are a symbol of responsible forestry, either directly from the forest itself or through a carefully verified chain of custody from the forest, through processors and traders and down to the consumer.

Companies labelling and selling products with labels and licence codes (for FSC, it is in the form FSC C##### and for PEFC it is PEFC/XX-XX-XX) have been audited against international standards to ensure that the products are certified and therefore trustworthy for consumers. These standards not only ensure that forests are responsibly managed, or the materials are responsibly sourced but that globally, certified companies meet a minimum set of labour requirements for their employees. It also affirms that forests are managed in a way which preserves biological diversity and benefits the lives of local people. We have so much power as consumers to demand sustainable, responsible products and the best way to do that is to choose certified products with these labels on and request them where they aren't currently available. If you want to go a step further to check a product, you can easily search the licence code on the NGOs websites to check whether they are certified!

*Brenna Harcom as the contributor*



## Repair Cafes

Forthcoming dates and booking for the repair cafes in Stroud (Trinity Room: 27 May and 4 June) and Nailsworth (Sub Rooms) can be found at <https://tinyurl.com/ycx8fysp>

## Reducing Plastics

If you're looking for inspiration about reducing plastic waste, why not check out the website of the award-winning Stroud Action on Plastic

**Domestic:**

[www.actiononplastic.org/actionathome/](http://www.actiononplastic.org/actionathome/)

**At work:**

[www.actiononplastic.org/at-work/](http://www.actiononplastic.org/at-work/)

**In schools:**

[www.actiononplastic.org/at-school/](http://www.actiononplastic.org/at-school/)

## Latest Terracycle collections

You can now take plastic take-away containers and lids as well as all brands of Tupperware-type tubs, random or damaged lids and mouldy, broken refillable drinking bottles or kids sippy cups. Drop at all the usual places - Bisley Greenshop, Chalford Hill School, Trish Watson's garage. All usable stuff donated will be rehomed until it breaks!

## Other Events

Nailsworth Walking Festival runs until June

11th – check out the programme at [tinyurl.com/3at2m5u9](http://tinyurl.com/3at2m5u9)

Stroud Valleys Project has a great programme at <https://www.stroudvalleysproject.org/events>

## Sharing the countryside with our dogs:

Please do check out the Gloucestershire Wildlife Trust [Canine Code](#)

If you would like to get involved with ChalCAN or be put in touch with one of the action groups (Biodiversity, Food & Waste, Energy or Transport) please contact [info@chalcan.org.uk](mailto:info@chalcan.org.uk) Do browse our website [chalcan.org.uk](http://chalcan.org.uk), follow us on Facebook and/or Instagram @chalford.can

PLEASE PASS THIS ON TO  
FRIENDS, NEIGHBOURS & FAMILY