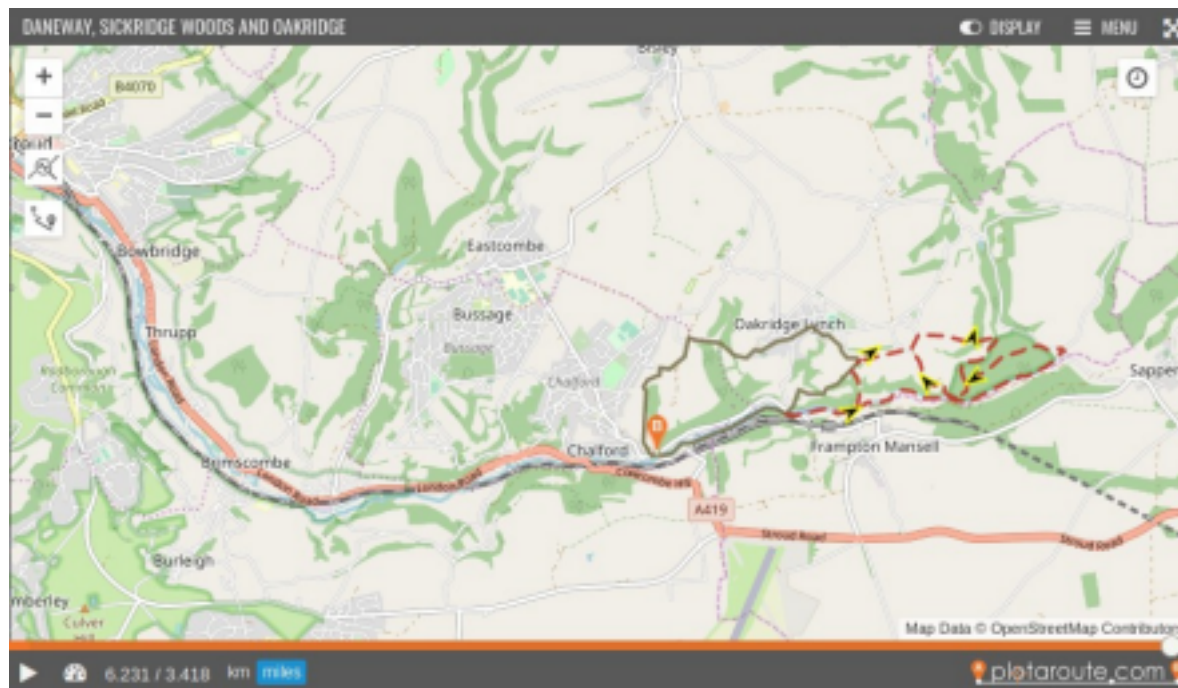


Daneway, Siccaridge Woods & Oakridge

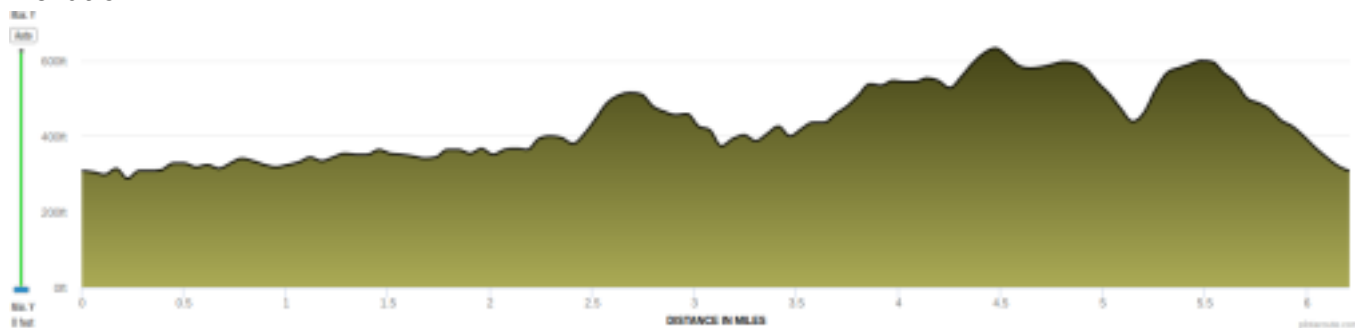


Length: 6.2 miles with lots of shortcuts	Terrain: paths and tracks		
Scenic: 4/5	Kid-friendly: 3/5	Buggies: not suitable	Ascent: 300m
Canal valley, diverse woods, sheep fields, nature reserves – very varied			
Start: Valley playing fields			
End: At start			
Hazards: several steep climbs and descents, very muddy in places in winter – but can be avoided. Few stiles.			
Animals: few			
Parking: limited parking at the playing fields, alternatively on the A419			

Location



Elevation



Detail

