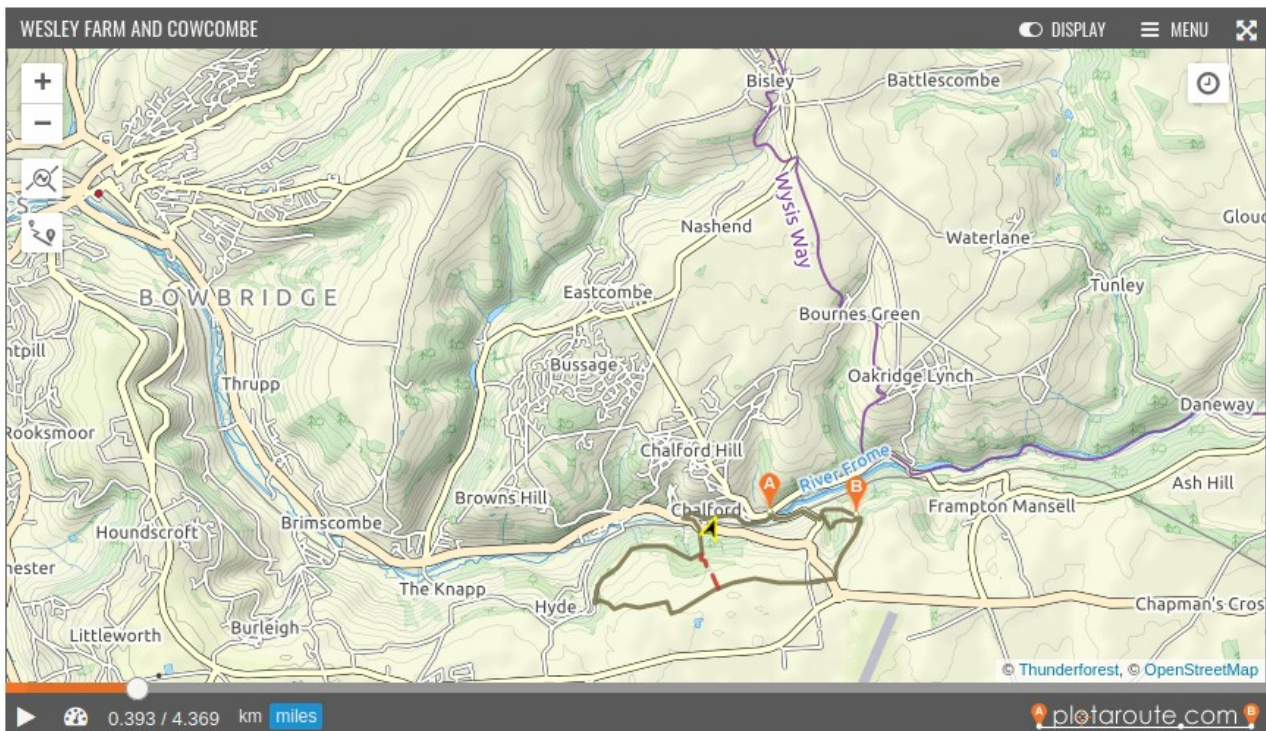


Wesley Farm and Cowcombe Woods

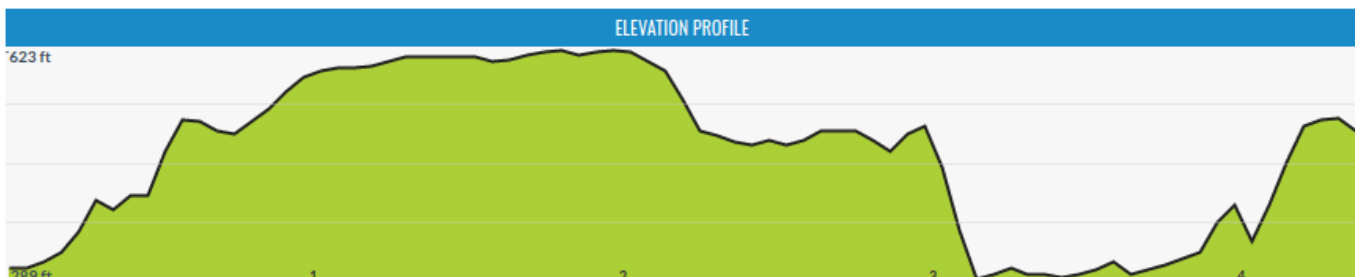


Length: 3.6 miles or 4.2 optional	Terrain: paths and tracks		
Scenic: 4/5	Kid-friendly: 3/5	Buggies: in part	Ascent: 150m
Upland fields, hidden valley and woods with two different beautiful views			
Start: Valley playing fields			
End: At start			
Hazards: one steep climb, steep descents, mud in winter			
Animals: in the fields on the hills.			
Parking: limited parking at the playing fields, alternatively on the A419			

Location



Elevation



Detail

