

France Lynch, Strawberry Banks & Dimmels Dale



Length: 2.2 miles	Terrain: paths and tracks		
Scenic: 4/5	Kid-friendly: 4/5 & Stream!	Buggies: in part	Ascent: 150m

Two valleys, two nature reserves and a wood - all from France Lynch

Start: Just beyond France Lynch passed The Court House, by a cottage called The Heavens

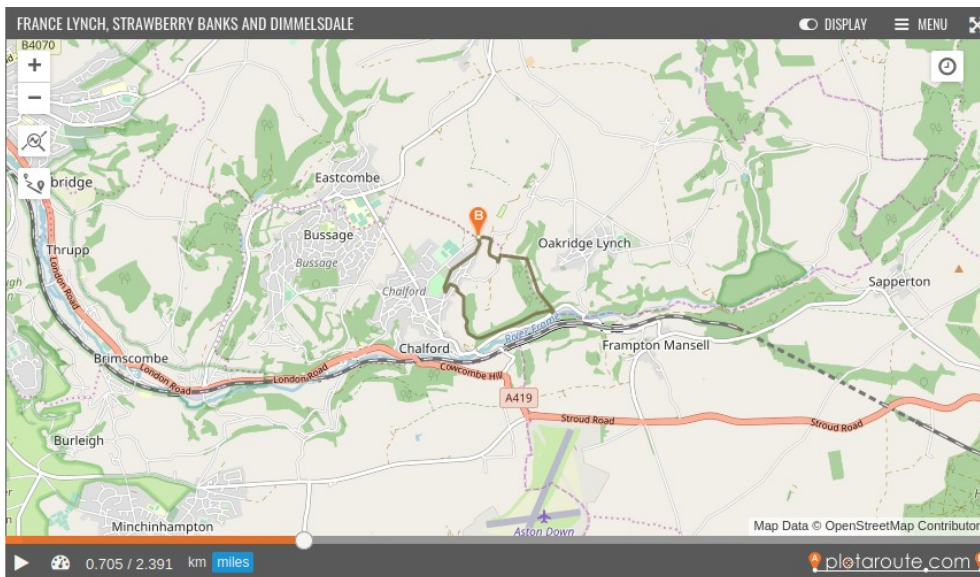
End: Back in the village near the church

Hazards: some steep climbs, but worth it

Animals: Sometimes there are ponies grazing the nature reserves

Parking: on Highfield Way, the top road above France Lynch as its wider and you can park by the verge.

Location



Elevation

