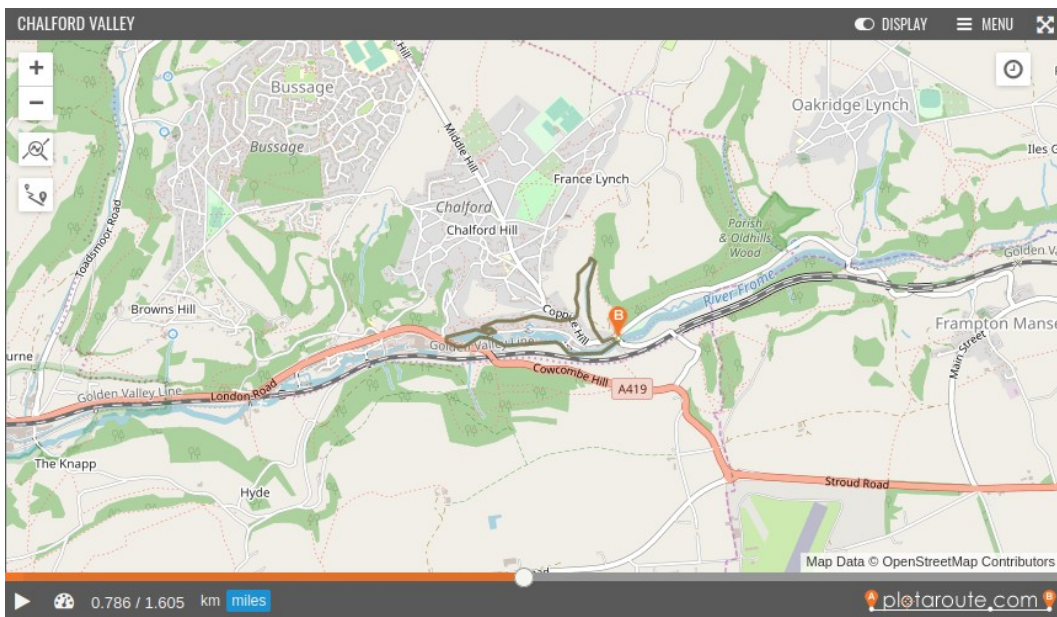


Chalford Valley

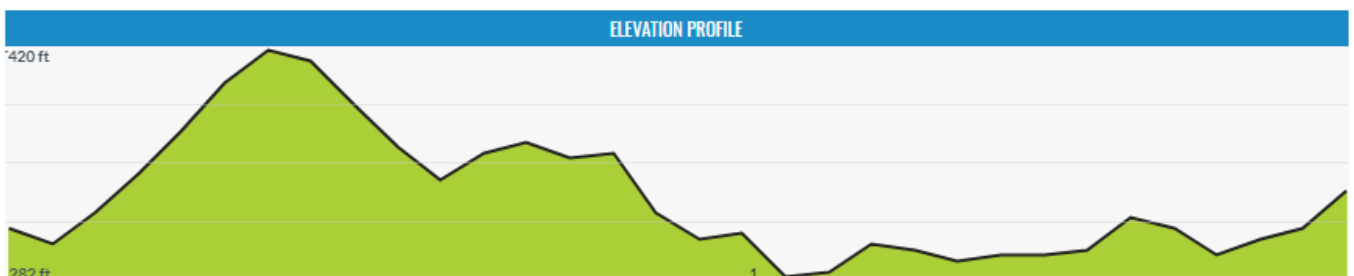


Length: 1.8 miles	Terrain: paths and tow path		
Scenic: 5/5	Kid-friendly: 4/5	Buggies: possible	Ascent/Descent: 95m/100m
A picturesque valley scene with rows of stone cottages appearing as fixed to the steep valley side, all facing south, and most vivid in the sunshine.			
Start: At either end of the High Street			
End: At either end of the High Street			
Hazards: just 100 metres along the busy A419, as marked			
Animals: only wildlife			
Parking: by Chalford Valley playing field on main A419, London Road layby			

Location



Elevation



Detail

