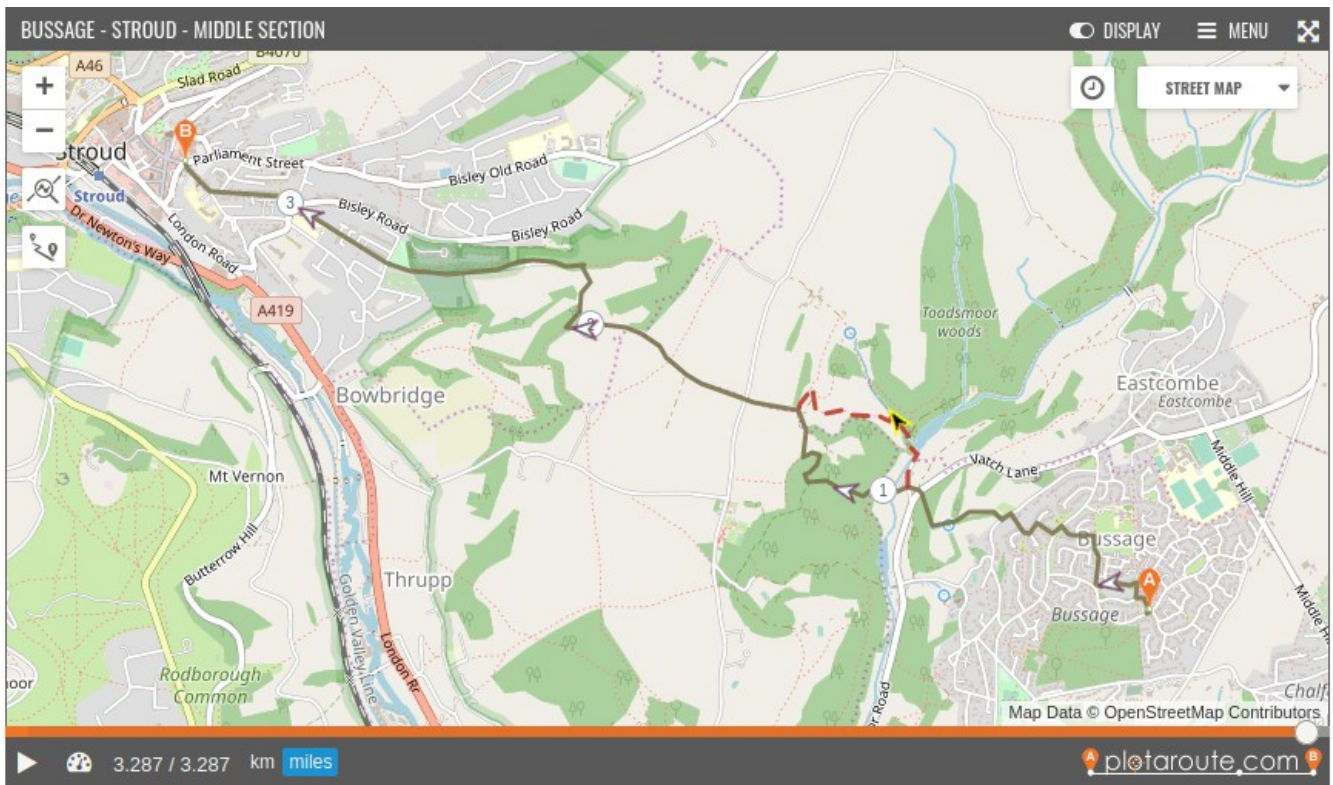


# Bussage to Stroud - Direct Route

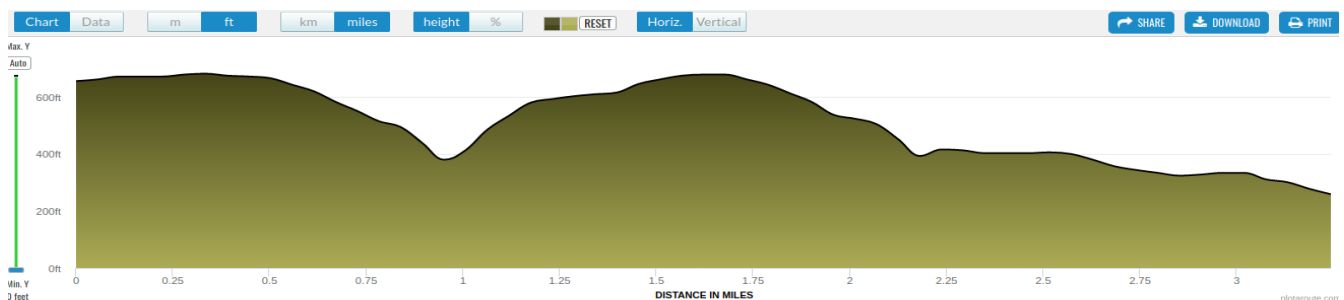


<b>Length:</b> 3.3 miles	<b>Terrain:</b> mixed		
<b>Scenic:</b> 3/5	<b>Kid-friendly:</b> 1/5	<b>Buggies:</b> No	<b>Ascent/Descent</b> 350ftm / 780ft
<b>A rewarding hike from Bussage to Stroud or vice versa. Half country, half town.</b>			
<b>Start:</b> at the Parish Offices opposite Tescos			
<b>End:</b> Top of Stroud High street			
<b>Hazards:</b> steep hills, some mud in winter, several stiles			
<b>Animals:</b> sheep at times			
<b>Parking:</b> in Bussage			

## Location



## Elevation





# Detail

